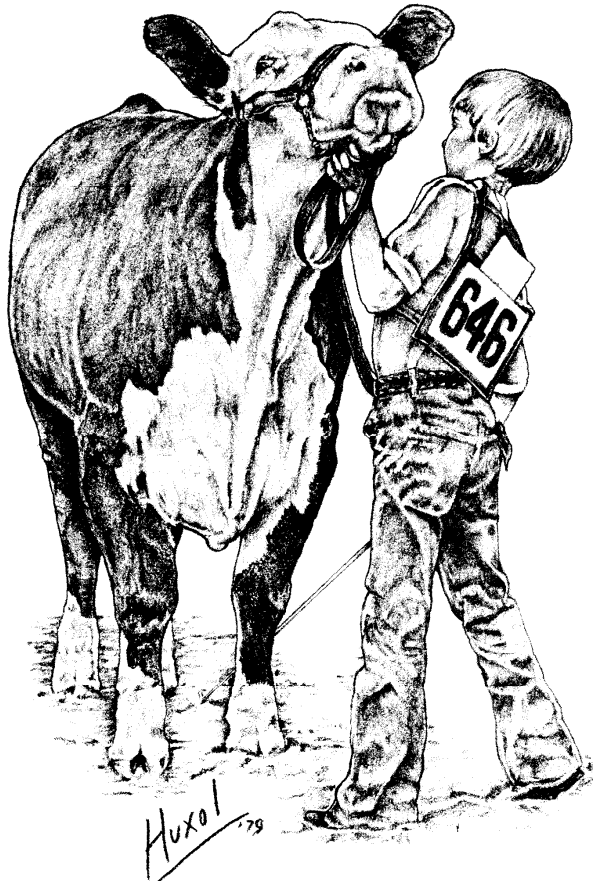


Dodge County Livestock Youth



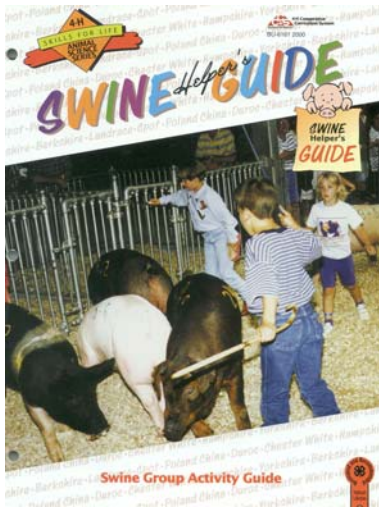
Project & Activities Handbook

Please retain these Livestock Youth Project Guidelines.

You only get updated information as it is published!

Swine Project Literature

Swine Project Leader Materials



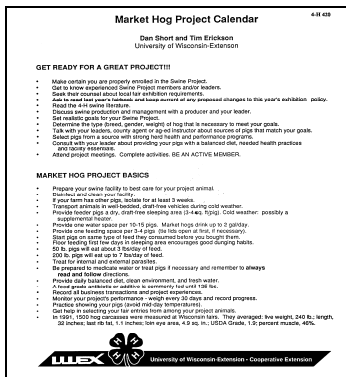
Swine Helper's Guide BU6161-2000 Swine Group Activity Guide

(Adult or junior leader guide, 1 per club)

This guide is for adults and older youth working with groups. It includes individual meeting guides as well as a variety of information and resources to develop additional meeting plans. This is the companion publication for Swine 1 “The Incredible Pig,” Swine 2 “Becoming Smart” and Swine 3 “Entering the Arena” series, defined below. Some Activities include determining feeder pig value, analyzing feed samples and feed requirements, identifying breed names and characteristics, judging clinics, skillathons and farrow to finish management practices. This guide provides additional learn-by-doing activities that may be adapted to the family, the classroom, 4-H project group, clubs or other groups. Valuable information is included on youth learning characteristics at various ages, helpful hints on developing life skills and answers to some activities. Youth are encouraged to identify a project helper to assist them in completing Swine 1, Swine 2 and Swine 3.

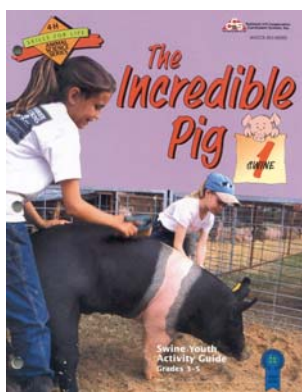
Swine Project Member Materials

All of the materials described below are designed for swine project members. The Swine 1, 2, & 3 series is written for beginning, intermediate and advanced learners respectively. Each guide includes an achievement program to provide challenging activities, a way to expand project experiences beyond the animal and a means to recognize youth for what they have accomplished.



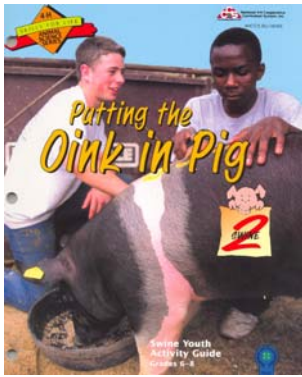
4-H 420 Market Hog Project Calendar

This calendar covers hog project basics, hog management and husbandry practices, how to prepare for the fair and some self-helps while you're showing at the fair.



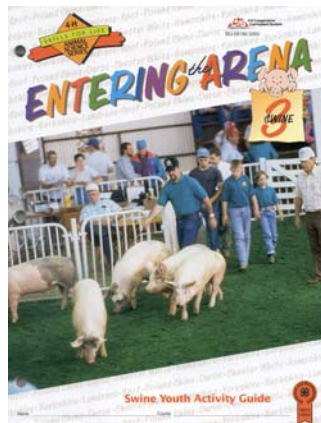
Swine 1 “The Incredible Pig” 4HCCS BU-08065-2004 Swine Youth Activity Guide

This is the first in a series of three swine project activity guides for youth. Each guide includes an achievement program to encourage youth to learn more about swine while developing important life skills. Activities have been designed so the youth has an opportunity to learn by doing, before being told or shown how. Subject matter includes identifying different hog breeds and body parts, observing swine behavior, hog nutrition, completing a project budget, fitting and showing a hog. It is not necessary to own an animal at this level. Youth are encouraged to complete a minimum of 7 activities per year and to complete level 1 within three years.



Swine 2 “Putting the Oink in Pig” BU06159-2002 Swine Youth Activity Guide

This is the second in a series of three swine project activity guides for youth. The activities in this guide are specifically designed to help youth develop skills in leadership, decision-making, planning and organizing, communicating with others, and learning to learn. Subject matter includes balancing a hog ration, diagnosing diseases; farrow to finish management practices and how to give a hog demonstration. Youth are encouraged to complete a minimum of 7 activities per year and complete level 2 within three years.

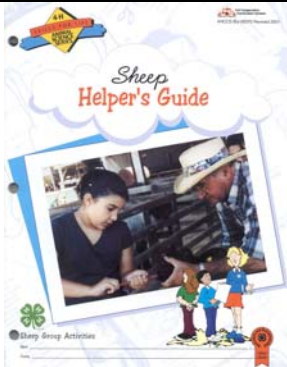


Swine 3 “Entering the Arena” BU-06160-2002 Swine Youth Activity Guide

This is the third in a series of three swine project activity guides for youth. Youth that have completed Swine 1 and Swine 2 know that each chapter encourages the practice of a certain life skill while doing an activity. Youth should remember that this is their own personal guide. Most of the questions youth will answer will not have a “right” answer. This is one of the purposes of the series. In many cases, because this is an activity guide and not a resource manual, youth will need to research other sources to complete a particular activity. For additional subject matter resources to complete a particular activity contact you leader or UW-Extension office. Subject matter includes, studying genetics, swine housing, careers, swine breeding operations, planning and conducting a swine judging contest or clinic. Youth should complete a minimum of 7 activities each year and complete level 3 within three years.

Sheep Project Materials

Sheep Project Leader Materials



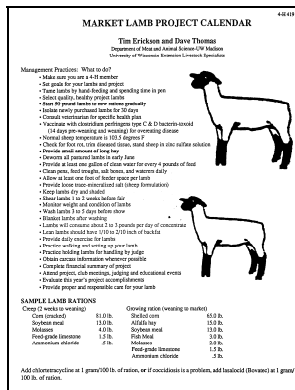
Sheep Helper's Guide 4HCCS BU-06370-2001 Sheep Group Activities

(Adult or junior leader guide, 1 per club)

This guide is for Adults and older youth working with groups. It includes individual meeting guides as well as a variety of information and resources to develop additional meeting plans. You'll also find answers to some of the activities that are included in the project activity guides. Some activities include, identifying and demonstrating sheep equipment, wool skillathons, making rope halters, preparing for lambing season and planning a lamb management calendar. This is the companion publication for Sheep 1 “Lambs, Rams and You”, Sheep 2 “Shear Delight” and Sheep 3 “Leading the Flock”.

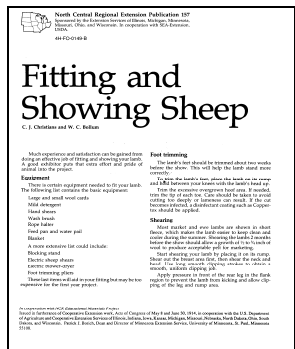
Sheep Project Members Materials

All of the materials described below are designed for sheep project members. The Sheep 1, 2, & 3 series is written for beginning, intermediate and advanced learners respectively. Each guide includes an achievement program to provide challenging activities, a way to expand project experiences beyond the animal and a means to recognize youth for what they have accomplished.



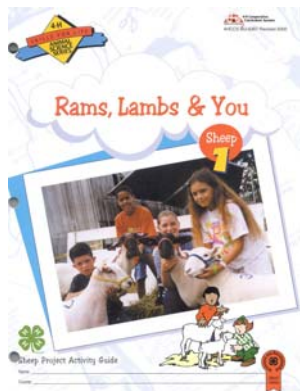
4-H 419 Sheep Project Calendar

This calendar covers some basic lamb management practices, sample lamb rations and how to calculate Average Daily Gain(ADG), so you can figure how many pounds a day a lamb will need to gain from birth to be at its finished weight by the fair weigh-in.



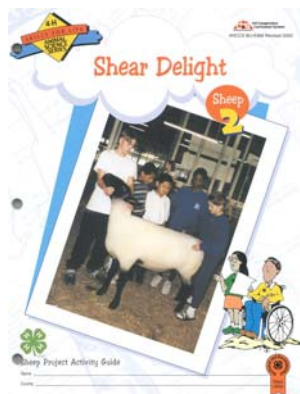
Fitting and Showing Sheep

This bulletin covers information relating to fitting and showing sheep. How to prepare your sheep for show and what equipment is needed. It also covers sheep herdsmanship and showmanship techniques.



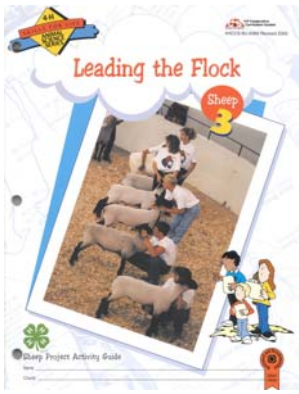
Sheep 1 "Rams, Lambs, and You" 4HCCS BU6367-2000 Sheep Youth Activity Guide

This is the first in a series of three sheep project activity guides for youth. Each guide includes an achievement program to encourage youth to learn more about sheep while developing important life skills. Subject matter includes, identifying sheep breeds and body parts, uses for wool, sheep by-products, observing sheep behavior, how to give a sheep demonstration and showing sheep. It is not necessary to own an animal at this level. Activities have been designed so youth have the opportunity to learn by doing. Youth are encouraged to complete a minimum of 7 activities per year and to complete level 1 within three years.



Sheep 2 "Shear Delight" 4HCCS BU-6368-2000 Sheep Youth Activity Guide

This is the second in a series of three sheep project activity guides for youth. The activities in this guide are specifically designed to help youth develop skills in leadership, decision-making, planning and organizing. Subject matter includes, identifying parasites, promoting meat safety, lamb selection, using medication safely, diagnosing diseases, preparing for lambing and exploring sheep careers. Youth are encouraged to complete a minimum of 7 activities per year and complete level 2 within three years.

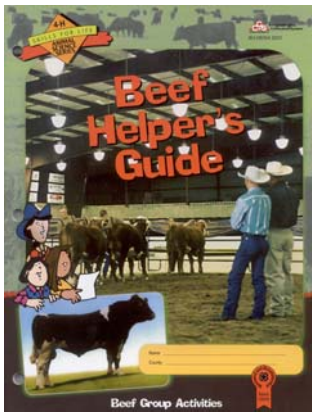


Sheep 3 “Leading the Flock” 4HCCS BU-6369-2000 *Sheep Youth Activity Guide*

This is the third in a series of three sheep project activity guides for youth. Youth that have completed Sheep 1 and Sheep 2 know that each chapter encourages the practice of a certain life skill while doing an activity. Youth should remember that this is their own personal guide. Most of the questions youth will answer will not have a “right” answer. Often times, youth will find that this guide raises more questions than it answers. This is one of the purposes of the series. In many cases, because this is an activity guide and not a resource manual, Youth will need to research other sources to complete a particular activity. For additional subject matter resources contact your leader or UW-Extension office. Subject matter includes marketing sheep products, planning and teaching a judging contest, studying genetics and planning a lamb judging workout. Youth should complete a minimum of 7 sheep activities each year and complete level 3 within three years.

Beef Project Literature

Beef Project Leader Materials



Beef Helper’s Guide BU-06354-2001 *Beef Group Activities*

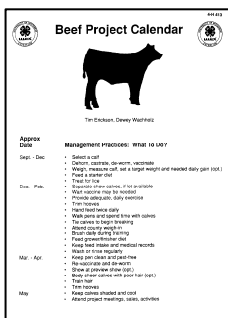
(Adult or junior leader guide, 1 per club)

This guide is for adults and older youth working with groups. It includes individual meeting guides as well as a variety of information and resources to develop additional meeting plans. This is the companion publication for Beef 1 “Bite into Beef”, Beef 2 “Here’s the Beef” and Beef 3 “Leading the Charge” series, defined below. Some activities include identifying and demonstrating fitting equipment, identifying parts of a beef steer, preparing a promotional tape for a public service announcement relating to beef or beef cattle production, organizing a mock auction, beef cattle skillathon and planning a judging contest and clinic. This guide provides additional learn-by-doing activities that may be adapted to the family, the classroom, 4-H project group, clubs or other groups. Valuable information is included on youth learning characteristics at various ages, helpful hints on developing life skills and answers to some activities.

Youth are encouraged to identify a project helper to assist them in completing Beef 1, Beef 2 and Beef 3.

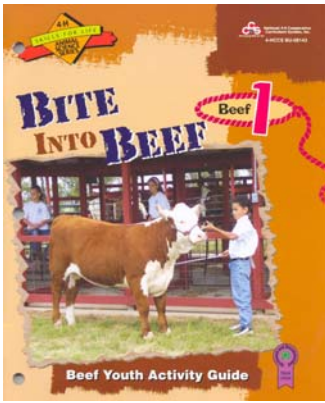
Beef Project Member Materials

All of the materials described below are designed for beef project members. The Beef 1, 2 & 3 series is written for beginning, intermediate and advanced learners respectively. Each guide includes an achievement program to provide challenging activities, a way to expand project experiences beyond the animal and a means to recognize youth for what they have accomplished.



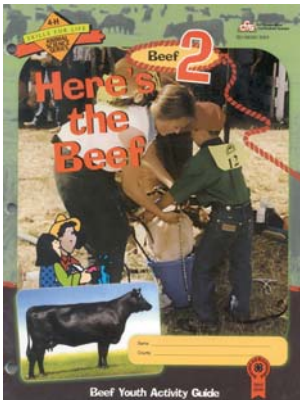
4-H 413 Beef Project Calendar

This calendar covers basic management practices to complete throughout the year and describes how frame scores are relevant to age and finished weight.



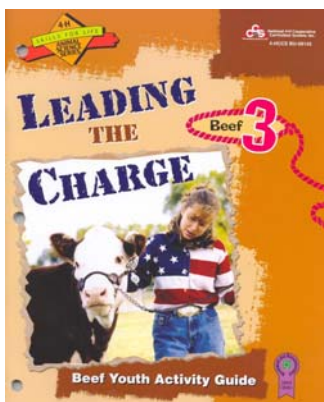
Beef 1 “Bite into Beef” BU-6351-2000 *Beef Youth Activity Guide*

This is the first in a series of three beef project activity guides for youth. Each guide includes an achievement program to encourage youth to learn more about beef while developing important life skills. Activities have been designed so the youth has an opportunity to learn by doing, before being told or shown how. Subject matter includes identifying beef breeds and body parts, selecting and properly preparing retail cuts, evaluating cattle, observing cattle behavior, showing cattle and beef by-products. It is not necessary to own an animal at this level. Youth should complete a minimum of 7 activities each year and complete level 1 within three years.



Beef 2 “Here’s the Beef” BU-06352-2001 *Beef Youth Activity Guide*

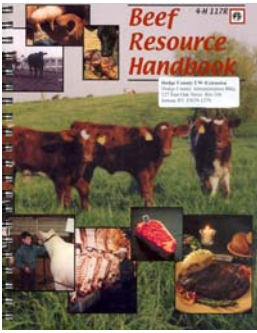
This is the second in a series of three beef project activity guides for youth. The activities in this guide are specifically designed to help youth develop skills in leadership, decision making, planning and organizing, communicating with others and learning to learn. Subject matter includes cattle safety, selecting quality feed, presenting oral reasons, marketing beef, investigating beef cuts and identifying healthy animals. Youth are encouraged to complete a minimum of 7 activities each year and complete level 2 within three years.



Beef 3 “Leading the Charge” BU-6353-2000 *Beef Youth Activity Guide*

This is the third in a series of three beef project activity guides for youth. Youth that have completed Beef 1 and Beef 2 know that each chapter encourages the practice of certain life skill while doing an activity. Youth should remember that this is their own personal guide. Most of the questions youth will answer will not have a “right” answer. Often times, youth will find that this guide raises more questions than it answers. This is one of the purposes of the series. In many cases, because this is an activity guide and not a resource manual, youth will need to research other sources to complete a particular activity. For additional subject matter resources contact you leader or UW-Extension office. Subject matter includes setting production goals, exploring beef related careers, cattle selection, planning a breeding programs, relating frame score to finished market weight and making a rope halter. Youth should complete a minimum of 7 activities each year and complete level 3 within three years.

Additional Resources Available for Purchase

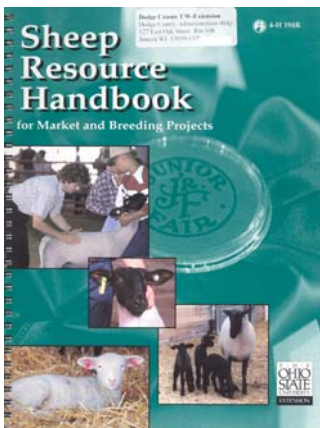


After you have made the decision to take a beef project, it is important that you know what type of animal you are looking for, how to feed it, diseases it may have, management techniques, and many other important concepts.

By teaching you these concepts through information and experience, this project will make it possible for you to produce a high-quality, lean meaty and wholesome end product that the consumer wants to buy. To have a successful project you must be willing to study and review the information contained in this handbook and apply it to your project.

It is important for parents to spend time helping their child obtain the resources needed to complete the project. They may offer other assistance when necessary, but should never interfere with the child's opportunity to learn by doing. Be available to listen to his/her needs and concerns, and offer praise whenever possible. Stress the value of doing ones own work and help their child realize how much he/she has learned from that work. To most children, a sense of accomplishment is usually more important than a ribbon or trophy.

It is also inappropriate for a professional to own, care for, or groom the project animal. 4-H members are to own their project animals and keep those animals under their care.

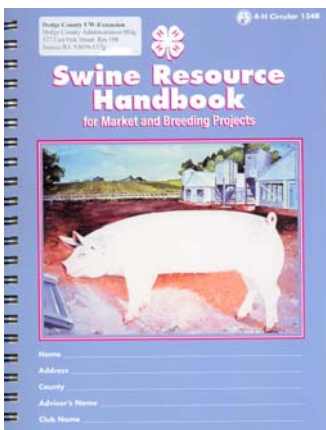


It is important that you know what type of animal you are looking for, how to feed it, diseases it may have, management techniques, and month other important concepts.

By teaching you these matters through information and experience, this project will make it possible for you to produce a high-quality, lean meaty end product—lamb that the consumer wants to buy. To have a successful project you must be willing to study and review the information contained in this handbook and apply it.

It is important for parents to stress the value of doing ones own work and help their child realize how much he/she has learned from that work. To most children, a sense of accomplishment is usually more important than a ribbon or trophy.

It is also inappropriate for a professional to own, care for, or groom the project animal. 4-H members are to own their project animals and keep those animals under their care.



After you have made the decision to take a market animal and or breeding project, it is important that you know what type of pig you are looking for, how to feed it, diseases it may have, management techniques, and many other important concepts.

By teaching you these principles through information and experience, this project will make it possible for you to produce a high-quality, lean, juicy end product—pork that the consumer wants to buy. To have a successful project you must be willing to study and review the information contained in this handbook and apply it.

It is important for parents to assist and supervise to a reasonable extents; help out as much as is necessary, **but do not do the various chores and requirements called for by the project.** These are for the 4-Hers to do. It is also inappropriate for a professional to own, care for, or groom the project animal. 4-H members are to own their project animals and keep those animals under their care.

Remember, your son or daughter's success in this and all projects depends to a large extent on the encouragement and support (in the appropriate measures) that only you can give.

Contact UW-Extension to order a book(s) you want or send in a clip-out from the 4-H newsletters (Jan-March).

4-H Record Books

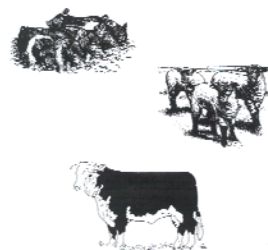
(as they pertain to the 4-H Livestock project)

Records help to improve your livestock project decision making and priority setting skills and establish direction and identification of your goals. These habits are especially important for livestock production. Production knowledge is extremely important when measuring your husbandry skills and evaluation of their profitability.

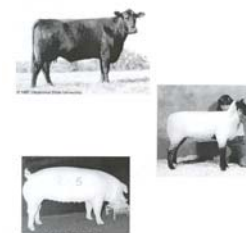
For the livestock projects records the following needs to be included:

- * Summary Sheet
- * Project Story/List/Outline - Explaining what you did and learned, any problems you had & how you solved them, examples of leadership, future goals.
- * The Record book forms for livestock include the following sheets:
 - **Junior** (Grades 4-8)
 - ✘ **Meat Animal Project Records**
Complete pages 1, 2, 3, 9, & 10 (comment page, optional)
 - **Senior** (Grades 9+)
 - ✘ **Meat Animal Project Records**
Complete pages 1-10 (comment page, optional)
 - **Breeding Stock Project Records Book** (used by members in raising breeding stock project)
 - **Beef Feeder Replacement Booklet** (used by members enrolled in “Beef Feeder Replacement” project)
- * You may include one photo for each project animal plus 6 additional photos/clipping which pertain to your project work.

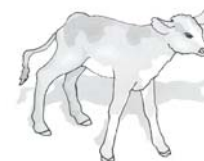
Meat Animal Project Records



“Breeding Stock” Project Records



Beef Feeder Replacement
Dodge County Livestock Project Material



This project booklet belongs to: _____

For a complete description of the record book guidelines use your Dodge County 4-H Record Book Guidelines Booklet.

Dodge County Fair

Entry day is Tuesday, and the Junior Livestock cattle shows are Wednesday. Adult leaders and youth are referred to the Dodge County Junior Fair Book for complete information regarding fair rules. Rules should be read carefully and strictly adhered to. **Save your Fair book. It is a 3-year Fair Book.** Any changes occurring after the printing of the Fair book will appear in the 4-H newsletter. <http://www.uwex.edu/ces/cty/dodge/4h/news.html>. Also there is information on the 4-H website under Dodge County Fair <http://www.uwex.edu/ces/cty/dodge/4h/DodgeCoFairInfoPg.html>

The Dodge County Fair is where youth, who are members of one or more of the following organizations (4-H Club, FFA Chapter) exhibit their livestock project animals. While at the fair, exhibitors have the opportunity to participate in several activities, which are evaluated by others, and premium money awarded.

***Livestock Judging**

The exhibitor displays the animal in the show ring, where the judge evaluates the animal on its confirmation. Each exhibitor of an animal project is awarded a blue, red, white, pink or green ribbon based on the judge's discretion of the animal's confirmation.

***Showmanship**

In this competition, the exhibitor is judged on the appearance of the animal (condition, grooming, clipping, cleanliness), her/his appearance and the way she/he shows the animal in the ring (leading, posing, recognition of the animal's faults and showing to overcome them, poise and alertness).

***Herdsmanship**

This is the way club or chapters display their animals in the barn. Points are awarded for decorations, cleanliness of animals and barn area, and sportsmanship of exhibitors. Selected judges walk through the barns and judge the exhibits through out the fair. Beef clubs/chapters will be broken down into small and large exhibits and judged as such.

Market Beef

- Market Beef entry fee is \$2.00 PER animal ENTERED.
- Exhibitors may have two market entries. Only one animal may be shown by an exhibitor in a subclass. If both market entries fall into the same subclass, one entry will be assigned to the next appropriate class by committee recommendation.
- Showmanship, you do not need to exhibit your own animal. Showmanship and Beef Feeder Classes will follow Beef Breeding Stock judging. It will be before the Steer classes.

Beef Carcass Show

Thursday after close of the Fair, Brandon Meats & Sausage

- Animals sold at Auction that buyers want custom processed at the same facility (buyer permission required)
- Animals of exhibitors not having sold in the Auction, whose exhibits meet live show weight and grade requirements. If the facility is limited to purchasing animals, entry is on a first-come first-entered basis.
- Persons having a second entry meeting weight and grade requirements wishing to sell their carcass (if numbers warrant) or retaining ownership if the selling allotment is filled.

All carcass participants will receive fair premium monies. All carcasses are judged with the same division shown live.

Market Hog

- Market Hog entry fee is a \$1 PER animal ENTERED
- **All Swine Project members that wish to sell their project animal must attend a MEAT ANIMAL QUALITY ASSURANCE PROGRAM, which will cover requirements of the *Pork Quality Assurance Level III Certification* program.**
- **ALL swine exhibited at a Wisconsin fair show or exhibition must be accompanied by a Certificate of Veterinary Inspection** or an Interstate Health Certificate signed by an accredited veterinarian.
- At spring weigh-in, all barrows & gilts MUST BE 75# or less.
- Market Hog Show is terminal show. Entries are not permitted to be taken home; nor are self-hauls permitted.
- There is a MINIMUM Fair weight of 230 lbs for Market Hog.
- Only ONE animal may be entered per entry number.
- **Entries can be EITHER a barrow or a gilt** (Do not indicate "Barrow" or "Gilt" on Entry Form....) Entries entered into subclasses at Fair.

Hog Carcass Show

Tuesday after close of the Fair, Country Meat Cutters, Reeseville

- The Market Hog which had been weighed and identified by the Official Committee and placed in the Live Show will be eligible for Carcass Show.
- Animals sold at the auction **will NOT** be eligible for Carcass show.
- Exhibitors may sign up for Carcass Show at County Fair.

All carcass participants will receive fair premium monies. All carcasses are judged with the same division shown live.

Market Lamb

- There is **NO maximum** May weight for feeder lambs.
- There is a 90 lb minimum weight at County Fair for Market Lambs
- The purpose of the junior market lambs exhibit is to encourage your people to produce and market high quality lambs as part of their farming program. **All entries must be free of antibiotics and meet all federal regulations.** *Testing may be an option.*
- Market Lamb entry fee is a \$1 PER animal ENTERED
- **Market Lambs MUST be dry when weighed at Fair.**
- No dying, spray painting or icing of lambs prior to/during show will be allowed. Any unethical treatment will not be allowed.
- Exhibitors agree to abide by all rules and regulations required for entry and to accept any/all testing systems selected by the Meat Animal Sale Committee to verify rule compliance. Failure to comply with any rule or failure of any testing procedure selected will result in exhibitor forfeiting all premiums, Auction proceeds, and being banned from future exhibiting at the Dodge County Fair.

Lamb Carcass Show

Wednesday after close of the Fair, Cedar Road Meats, Iron Ridge

- The market Lamb which had been weighed and identified by the Official Committee and placed in the Live Show will be eligible for the Carcass Show.
- Exhibitors may sign up for Carcass Show at County Fair.
- Animals sold at the auction **will NOT** be eligible for Carcass show.
- Limit of one animal PER project member in Carcass Show.
- Carcass exhibitor may be expected to provide own buyer before Carcass show

All carcass participants will receive fair premium monies. All carcasses are judged with the same division shown live.

Dodge County Meat Animal Sale

Each year the Dodge County Meat Animal Sale Committee sponsors the sale, which includes 125 animals total, 50 Market steers, 50 Market hogs and 25 Market lambs. It is the committee's intention to make your livestock project experiences as meaningful as possible. Livestock members who wish to sell at the Dodge County Meat Animal Sale need to complete a Livestock Project Member Participation card. The card needs to be completed and turned into the Meat Animal Sale Committee at project weigh-in day at the fair.

Each project member **MUST** attend **four** project educational programs during this project year **AND** attend either the MAS Pre-Sale or MAS Post-Sale meeting. While attending an educational program have the instructor or leader sign and date the project member participation card. Please refer to the Dodge County Junior Fair Book for complete information regarding the Meat Animal Sale rules.

- “A project member is limited to sell only one animal in the sale. **If an exhibitor has more than one qualifying sale entry, that exhibitor must make the selection of which one to sell and notify the Sale Order Committee within one hour following his last market class or by 9:00 PM Wednesday evening.** Failure to notify committee of the animal selected for sale will then become the discretion of the Sale Order Committee. The typed sale order is final.” Alternates may be selected to fill sale quota.
- All qualifying animals will be automatically placed on the sale order unless withdrawn by the project member by notifying the Sale Order Committee **prior to 9 PM Wednesday evening.**
- Any documented physical tapering of an animal or carcass, or a practice that causes unnecessary suffering to the animal, or illegal drug use that alters an otherwise normal carcass is grounds for exhibitor discipline. **The Specie Committee will determine unethical treatment.** *Discipline may include loss of premiums, return or forfeiture of sale proceeds, restriction of further county fair exhibition and possible criminal prosecution.*

Wisconsin State Fair

- An exhibitor must be a 4-H member, or FFA member in good standing with their respective youth group affiliate.
- **All Junior State Fair Livestock Entry forms and monies are due into Bonnie at the UW-Extension office by June 25.**
- An exhibitor must be 12 years old as of January 1 of the present year.
- Participating youth are responsible for following the rules of the Wisconsin State Fair: Junior Fair Exhibitor's Handbook & Premium List. Exhibitors **MUST** visit the Wisconsin State Fair website for the information concerning the species desired to be entered.
- Wisconsin State Fair's website: <http://www.wistatefair.com>
- Exhibitors will be required to attend the Mandatory WSF Livestock Meeting and to sign and honor behavioral agreement contracts (with Dodge County and the Wisconsin State Fair). Exhibitors are reminded that it is a privilege to represent the County at State Fair, not a right!
- Attitude is everything! State Fair exhibitors must follow the behavioral agreement set up by the Dodge County Leader's Association or they reserve the right to send exhibitors home or ban exhibitors from showing in subsequent years if: members don't follow the rules, exhibit poor sportsmanship or represent Dodge County in an unfavorable way.

More Opportunities for Livestock Project Members:

Please be sure to read your Dodge County 4-H Family Newsletter for detailed information and deadlines regarding the events described on the next page.

EDUCATIONAL SESSIONS

COUNTY LIVESTOCK PROJECT MEETINGS

Project meeting will be offered at the county level with the beginning session being of general nature followed by individual sessions for beef, sheep and swine. Topics to be covered will be: 1) local contacts, producers and haulers; 2) feed and rations; 3) health care and hoof trimming; 4) breeds and characteristics; and 5) showmanship, fitting and herdsmanship.

Many clubs **DO NOT** have livestock project leaders and it is hoped that these offerings will aid livestock project members.

FAMILY LEARNING DAYS

Once in February and once in March, there is offered a “Family Learning Day” during which livestock educational sessions are offered. These will be varied in content according to requests gathered from livestock members and education committee members. Feel free to request topics of interest to Bonnie at the UW-Extension office.

NASCO ANNUAL SHOWING & GROOMING DEMONSTRATIONS, May, Fort Atkinson

Nasco will be presenting its Annual Showing & Grooming Demonstrations in May. Experienced showmen will conduct these informational demonstrations. Topics for discussion will include animal selection, proper clipping techniques, choice of grooming equipment and showmanship. Questions may be freely asked during the demonstrations.

During each demonstration, door prizes will be given away and each person attending will receive a valuable discount coupon, which may be used at the Nasco Store.

MEAT ANIMAL QUALITY ASSURANCE [MAQA] PROGRAM

These educational sessions will be offered at both county “Family Learning Day” and in June. Swine project members are required to attend one of these sessions on an annual basis to meet the requirements need for the sale of their swine through the pork producers organization. Beef & Sheep project members are encouraged to attend to learn care, management, nutrition, health, and much more needed for effective project work.

SOME COUNTY SCHOLARSHIP OPPORTUNITIES

DODGE COUNTY YOUTH PORK AWARD Applications Due: October 10 to Dodge County UW-Extension office

The Dodge County Pork Producers are sponsoring a \$250 Cash Youth Award. This award will recognize an outstanding youth swine project member who has demonstrated tremendous pork interests and management skills.

Eligibility:

- Currently enrolled as a Dodge County Swine Project member (4-H or FFA)
- Minimum 3 years project experience
- can apply more than once, only win once

Selection:

- Must complete and submit application form to UW-Extension office by October 10, 2001
- Must have a recommendation from a 4-H Leader or FFA Advisor
- Interview maybe necessary to select a winner

Applications can be obtained from Bonnie at the UW-Extension office.

WISCONSIN LIVESTOCK EVENTS

You can find these events and their information on the Animal Science Youth page

<http://www.uwex.edu/ces/animalscience/youthlivestock/index.cfm> or the State 4-H website under events and calendar <http://www.uwex.edu/ces/4h/events/index.cfm>

WISCONSIN’S ANNUAL LIVESTOCK SHOW CAMP – Mid-June

The camp is going to be fun filled as well as educational. National recognized individuals will present the programs on evaluation, showmanship and management techniques.

The camp is open to all youth between the ages of 9-19 of January 1st, of the current year. Families are invited to attend. Housing will be provided in the State Fair dorms.

The cost for the camp includes housing and meals for the show camp, a cookout, a Milwaukee Mustang’s game, social, T-shirt and prizes. Forms for registration can be obtained at the UW-Extension office; register by **May 1st**.

AREA ANIMAL SCIENCE DAYS (AASD) – End of June

Area Animal Science Days is an annual event held at four rotating county locations throughout Wisconsin. Livestock activities include: Livestock Judging, Livestock Quiz Bowl & Meats contest. 4-H members who want to participate at Area Animal Science Days in Livestock judging activities are encouraged to attend County Livestock judging workshops. See the Livestock Project Calendar of Events for information on workshops and Livestock Quiz Bowl workouts.

LIVESTOCK JUDGING CONTEST – in Conjunction with (AASD)

Each county may enter as many livestock-judging members as they wish, however they must be registered by their county in the Area Animal Science Days (AASD) contest. The team score is composed of the three high scoring individuals on that team. All youth are eligible for individual recognition. Senior competitors place eight livestock and meat classes, identify retail & processed meat cuts, grade three classes, answer 5 classes of questions and give two sets of oral reasons. Junior competitors place eight livestock and meat classes, identify retail & processed meat cuts, grade and answer questions for three livestock classes. Junior team members also are encouraged to participate in an afternoon reasons workshop.

The top two 4-H senior scoring groups of three individuals, plus an alternate from the Northwest and Northeast Area and the top four teams from the Southern Area, will be invited to compete at the State Livestock Judging Contest. The alternate may be selected by county criteria but must have competed at their respective district contests.

The top two Junior & Senior teams from each District are allowed to compete at the State Livestock contest.

ANIMAL WELFARE CONTEST

Project areas are invited: goats, rabbits, poultry, dairy, beef, sheep, horse, swine, and veterinary science. There will be two age divisions in the Youth Welfare Judging Contest. The junior division made up of 3 to 4 members under 14 years of age as of January 1. A senior division will be teams of 3 to 4 members who are all 14 years of age or older as of January 1, and that have not reached their 19th birthday prior to January 1.

This contest allows 4-H and FFA members (teams of 3 or 4 members or compete individually) to develop the skills to critically examine a situation to gather unbiased information, and use that information to make a subjective but educated assessment of welfare quality in a fun and competitive atmosphere. The youth competition is based on materials that members have access to through enrollment in the various livestock projects. The youth will evaluate scenarios individually and also in a team category. Teams will be asked to answer a set of questions regarding the scenarios.

ANNUAL BADGER KICK-OFF CLASSIC

This show has grown to be one of the most prestigious prospect shows in the area. Again this year we will be having a Market Heifer Division and a silent auction. The show starts on Saturday and finishes on Sunday. Cash prizes for the Top 5 Market Animals and Top 5 Heifers will be awarded.

Complete details are available on the website www.badgerkickoffclassic.com

STATE 4-H LIVESTOCK QUIZ BOWL

Livestock Bowl is a quiz competition where all the questions are about beef, sheep, swine, and meat goat topics and students use a buzzer in order to answer the questions. Teams compete in a double elimination format by giving oral answers to questions posed by a moderator. Each match has both an individual and toss-up question round. The teams are divided into three age divisions. The junior division is made up of four members who are under 14 years of age as of January 1. The senior division is for teams of four members who are all 14 years of age or older as of January 1. A mixed team must contain at least one youth from each age division. Quiz Bowl workouts are conducted at the county level preceding this opportunity.

STATE 4-H LIVESTOCK JUDGING CONTEST

The contest is held in July at the Arlington Ag Research Station. The contest consists of six classes, breeding & market beef, sheep & swine. There will be three sets of reason classes and there will be a maximum of ten questions asked on those classes, which are not reason classes. There will not be grading at the State contest.

The high team at the State contest will represent Wisconsin at the North American Livestock 4-H Judging Contest in Louisville, Kentucky. The second place team will compete at the National 4-H Livestock Judging Contest held at the American Royal Livestock, Horse Show and Rodeo in Kansas City, Missouri.

STATE MEATS JUDGING CONTEST

This contest is held in Madison in February. Workouts are conducted at the county level. Members will gain an appreciation of quality meat cuts and recognizes grading procedures. Five main areas will be the focus of the training workshops:

1. Yield & Quality Grading of Beef, Sheep & Swine Carcasses
2. Selecting & Ranking Meat Cuts
3. Food Safety, Labeling & Nutrients
4. Identifying Various Meat Cuts from Beef, Pork & Lamb
5. Differences in Quality Grades.

Members will gain an appreciation of quality meat cuts and recognizes grading procedures.

STATE LIVESTOCK SCHOLARSHIPS

WHITMORE MEMORIAL SCHOLARSHIPS

This scholarship was established by Marian Whitmore and the Wisconsin Pork Producers in honor of the former master statesman and communicator throughout the swine industry, Rex Whitmore.

The Whitmore Memorial Scholarship totals \$500 and will be given on an annual basis in conjunction with Winter Ag Expo. One finalist from UW-Madison, Platteville and River Falls will be interviewed for the scholarship. All finalists are requested to attend the Winter Ag Expo.

Eligibility Requirements:

1. Must be a registered junior or senior in college at one of the following University of Wisconsin campuses: Madison, Platteville, or River Falls.
2. Preference given to a Wisconsin resident.
3. Priority given to those applicants pursuing an Animal Science major or closely related major.
4. Criteria considerations include but are not limited to:
 - a. Grade point - applicant should be in top one-third of class
 - b. Extra-curricular activities - demonstrate leadership and ability to share knowledge
 - c. Career orientation
 - d. Financial need

Applications can be obtained from the UW-Extension office and are due December 15, to the Wisconsin Pork Producers, PO Box 327, Lancaster, WI 53813.

WISCONSIN 4-H ANIMAL SCIENCE SCHOLARSHIP - DEADLINE: MARCH 15

There is a \$500 4-H Animal Sciences Scholarship sponsored by Oscar G. and Mary M. Wallfel 4-H Scholarship fund. Applicants must be enrolled or planning to enroll in the College of Agriculture & Life Sciences at any of the University of Wisconsin Campuses. Applicants must currently have a grade point average of at least 2.5 on a 4.0 scale and be from a rural community outside of Dane, Kenosha, Milwaukee and Racine Counties.

If you are interested in obtaining a scholarship application, contact Bonnie at the UW-Extension office. All applications are due to Laura at (608-262-1597) the Wisconsin 4-H Foundation.

WISCONSIN STATE FAIR SCHOLARSHIPS

Three scholarships of \$1,000 for each first place winner per species will be offered through the Wisconsin Livestock Breeders Association and the Wisconsin State Fair. Also three runner-ups will also be selected and these individuals will receive \$500 each. These scholarships are an effort to recognize the achievements of the Wisconsin State Fair Junior Livestock exhibitors through a scholarship program for their education.

Final selection of the winners will be by interview at the State Fair just prior to the Governor's Auction.

, where then the winners will be announced. The applicant must be a junior livestock exhibitor at the current Wisconsin State Fair, at their District Livestock show or at the Spring Preview show, be enrolled or planning to enroll in a university and be between the ages of 17-19 as of January 1, of the current year. For more information contact the UW-Extension office.

WISCONSIN PORK PRODUCERS ASSOCIATION SCHOLARSHIP

The Wisconsin Pork Producers Association is sponsoring a scholarship program for high school seniors. The scholarships recognize individuals pursuing a career in agriculture. Preference will be given to those students possessing leadership abilities and interest in the swine industry.

Scholarship Requirements

1. All applicants must possess a sincere interest in the pork industry.
2. All applicants must pursue a post high school education, i.e. college, vocational school, short course, etc.
3. Only seniors in high school are eligible to apply.
4. Five finalists will be chosen from the applications received by the scholarship committee panel.
5. Applications will be judged on the following basis: short essay 50%; agriculture experience 15%; financial need 15%; involvement outside FFA/4-H 10%; educational background 5%; transcript 5%.
6. Each of the five finalists will be interviewed to determine the \$500 scholarship award winner sponsored by Pfizer. The interviews will be scheduled in December. Each finalist will be contacted in advance of scheduling.
7. Each finalist will receive a \$250 scholarship from the Wisconsin Pork Producers.
8. Each finalist is asked to attend the scholarship presentation at the Annual Pork Industry Awards banquet in conjunction with Winter Ag Expo.
9. The scholarship will be awarded after the WPPA office has received a copy of registration from the school in which the winner has enrolled.

Applications can be obtained from the UW-Extension office. All applications are **due December 15** to: Wisconsin Pork Producers, WPPA Scholarship, PO Box 327 Lancaster, WI 53813.

RESOURCE GUIDE

Cooperative Extension Media Collection
21st edition, April, 1996



AUDIO VISUAL RESOURCE MATERIALS

Audiovisual materials (videotapes, skillathon lessons, slide sets, etc.) are available for club or chapter use. By contacting the Dodge County UW-Extension, an order can be placed with the Cooperative Extension Media Collection in Madison. The club or chapter cost to use audiovisual materials is the return first class postage or UPS charge. Leaders are encouraged to request audiovisual materials at least three weeks prior to the desired date of their use. Note: 4-H General Leaders and Vocational Agriculture Instructors have been sent a current listing of livestock audiovisual materials. Please visit with these individuals about AV materials for your group's use.

The Resource Guide listing all of the audiovisual materials is available from the Cooperative Extension Media Collection, which is located at the Dodge County UW-Extension Office. The list can also be obtained on the website page at <http://www.uwex.edu/ces/media/catalog>. Leaders are invited to peruse the more than 1,700 listings, covering a vast array of subjects.

Video Tapes

Some of the more popular livestock related video tapes for club or chapter use include the following titles: Cattle Breeds, Baby Pig and Sow Management, Applying USDA Swine Grades to Live Animals, Cattle Abnormalities, Cattle Handling & Transportation, Cooking Today's Beef, Ethics in Livestock Shows: Ethics in Our Lives, Exhibiting Beef Cattle: The Little Things that Make a Difference, Fitting Sheep for Show; Fitting Show Steer and Oral Reasons Made Easy.

Skillathons

Skillathons are laminated tabletop displays that are typically comprised of props and question and answer sheets. Popular livestock skillathon titles include: A Cow's Stomach, Beef Breeds, Beef Cattle Quality Assurance, Breeds of Swine, Breeds of Sheep, Labeling of Processed Pork Products, Cattle Illnesses and Pork Quality.

Slides

Livestock related slide set titles include Baby Pig Survival, Basic Sheep Handling Skills, Ewe & Lamb Management, Fitting & Showing Sheep, Judging Hampshire Ewes and Sheep Casteration.